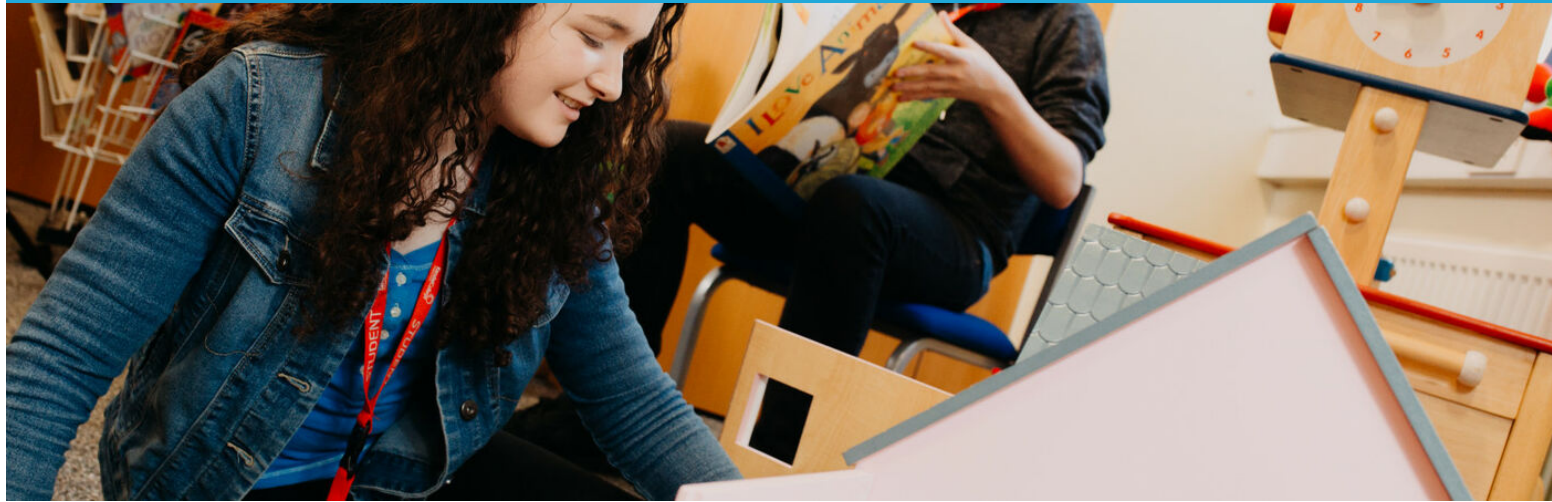


EDUCATION & CHILDCARE T-LEVEL

Course Mode	Full-time
Location	Milnthorpe Road Campus (MRC)
Duration	2 Years
Level	3



Course Overview

This T-Level course is equivalent to 3 A-Levels. It will be suitable for you if you have a genuine interest in working with children and young people and want a qualification that offers a licence to practice with children. It also provides flexibility to work in a range of job roles in education, health and social care with children and young people across the 0-19 age group. Working with children and young people requires a lot of patience and enthusiasm yet is highly rewarding.

Our tutors are all education and childcare professionals with extensive experience working in primary schools, early years settings and residential schools. The department has excellent links with many academic and sector partners, including the NHS, UCLan, Schools Direct, University of Cumbria, Children's Services and a wide range of schools, nurseries and children centres. As part of the course, you will undertake a minimum of 750 hours in industry placement over two years. This will include the full range of children's settings which will involve planning, implementing and evaluating play and learning experiences to support children's learning and development.

You will spend two days in placement and three days in college each week. In year one, you will study 12 elements of core knowledge:

- The broader education context
- Child development
- Supporting education
- Safeguarding health and well-being
- Behaviour
- Observation and assessment
- Equality and Diversity
- Special educational needs and disability
- English as an additional language
- Parents, families and carers

- Working with others
- Reflective practice

In year two, you will focus on completing an occupational specialism within Early Years Education and Childcare. This aims to develop the knowledge and skills required to enter the workplace as a competent practitioner or further study. It seeks to deepen the core knowledge developed in year one to practice within the early year's sector. Assessment includes exams, practical tasks, an employer-set project, assignments and observation of practice in industry placement.

Entry Requirements

You should have a minimum of five GCSEs at Grade 4 or above, including English and Maths, or Level 2 Technical Diploma in Children's Play Learning and Development (Merit or Distinction) plus again a Grade 4 or above in English and Maths and a satisfactory tutor reference.

As part of the entry criteria for this course, you will need to have a full DBS certificate completed by the Disclosure and Barring service. This does not mean that if you have any previous convictions or warnings, you will not join this programme. Still, an assessment will be completed as to your suitability to progress on to the programme. Please discuss with us in confidence if you have concerns about the content of your check.

In addition, you will be given an interview with a member of the Education and Childcare team to assess your suitability and potential for successful completion of the course. You will also need to demonstrate good communication skills and a commitment to working with children.

NB: Enrolment on this course is dependent on meeting the Entry Requirements stated above.

After your course

There are three main progression routes following the completion of T-Level in Education & Childcare:

- Skilled employment within the Education and Childcare sector such as Education and Childcare assistant - Early Years Educator or within education roles such as a Learning Mentor.
- Higher Level apprenticeships at Level 4 and above may progress you into careers such as an Assessor in education.
- Higher Education as UCAS points has been awarded to T-Levels. See the UCAS website for more details. Progression routes onto Higher Educational pathways include education and childcare relevant Foundation Degrees and Degrees such as teaching, youth work and early years studies.

Fees

£3000.00

The fee displayed is the course fee. Course fees are per year for full-time & degree-level courses, and per course for part-time courses.

There may be other costs associated with this course e.g. kit, equipment, books, trips etc. Financial support may be available to support you with these. See the [Student Money](#) pages for more information.

Courses Fees

The current full-time & degree-level fee information is related to the 2021/22 academic year and is subject to change before the start of the course. Fees for 2022/23 will be updated in the Spring Term 2022. There may also be additional costs associated with the course.

Entry Level, Level 1 & Level 2 Courses

You may qualify for financial support to cover the cost of a government-funded qualification if any of the below apply to you:

- Have an annual salary of less than £18,525
- Receive an eligible means-tested benefit e.g. JSA, ESA or Universal Credit
- Were aged 16-18 on 31/08/21 and are not studying at another school/college
- Were aged 19 or over on 31/08/21 and do not already have a Level 1 or 2 qualification
- Have a household income under £25,000 and are in financial hardship

See the [Student Money](#) pages for more information.

Student Finance (Degree-Level Courses)

Whether you qualify for student finance depends on specific criteria. The main student finance package for full-time students includes a tuition fee loan and maintenance loan for living costs. Part-time students can access a tuition fee loan to pay for your course. Generally, you will only get student finance if you're doing your first degree-level qualification. This is true even if your previous course was self-funded. For further information please see www.gov.uk/student-finance.

The Access to Learning Fund is a non-repayable discretionary fund that gives students facing hardship extra financial support to access and remain in higher education. This can be accessed via the college. Please speak to [Student Services](#) for more information.