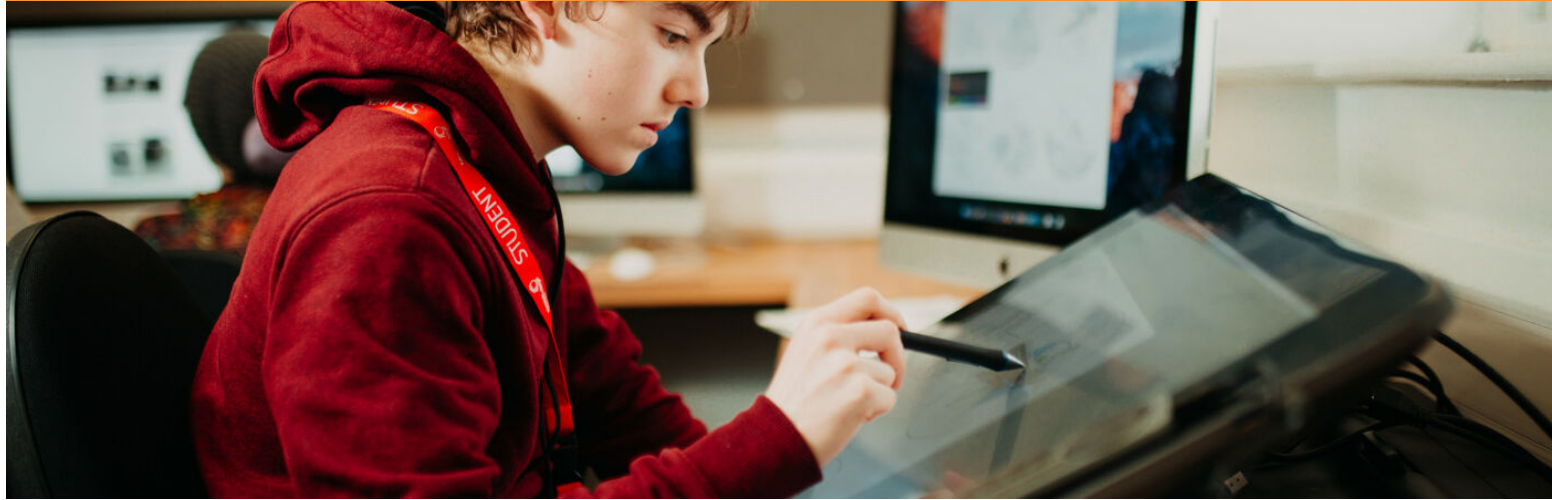


# ART & DESIGN FOUNDATION (PHOTOGRAPHY)

Course Mode	Full-time
Location	Arts & Media Campus (AMC)
Duration	1 Year
Level	3



## Course Overview

This pre-degree course prepares you to apply with confidence for a place on any Photography or Lens based BA (Hons) degree course. This is an intensive, creative course that promotes and stimulates inventive and experimental analysis of the arts. Your experience will be rich, diverse and challenging.

Learners develop knowledge, understanding and skills required by the sector, including essential employability skills, and apply them in real work contexts. Students will regularly work with outside businesses on live projects and exhibit in external venues. The course is designed to bridge the gap between A-levels and higher-level specialist degree courses at prime universities. The course tutors are experienced professional artists and designers who bring a wealth of practical knowledge and creative ideas with them. Our goal is to provide the creative groundwork on which you can base the rest of your professional life.

For the first few months' students will work in the exploratory stage, where they will explore media experimentation across a range of art and design disciplines. Students then move into the specialist pathway stage where they can choose from a range of subjects listed below: Fine Art Photography - Including Installation. Graphic media - Including Graphic Design, Animation, Digital imaging, 3D Computer modelling. Lens Based - Including Film, Photography, Photojournalism. Fashion Photography - Including Fashion Promotion and Marketing.

The curriculum also includes; the history of art, design and photography visiting practising lecturers, real life industry projects and professional practice. During the last 3 months students will work at Level 4 producing their own self-directed Final Major Project, which comes together in a final exhibition. Assessment is through a continuous assessment of portfolio and project work evaluations leading to a final major project.

## Entry Requirements

This is a pre-degree programme suitable for 18+ applicants intending to apply to higher education. Entrants typically have either a Level 3 Extended Diploma in Art and Design, or A Levels including Photography and/ or Art & Design. You will also be required to provide a portfolio of your art and design work at interview. If you are a mature applicant (21+), we would be happy to interview you based on a representative portfolio of your artwork.

## After your course

Foundation students have progressed onto fine art, documentary, fashion photography and other related degree courses (graphic design, film, animation etc) at universities across country, including London College of Fashion, London College of Communication, Central St. Martins and Goldsmiths, Cardiff, Leeds, Manchester, Edinburgh, Glasgow, Blackpool and Carlisle. Other students have progressed directly into a wide variety of creative industries locally (graphic design, social photography and event design) and some students find the natural progression route for them is start their own business as a freelance.

## Fees

£3500.00

*The fee displayed is the course fee. Course fees are per year for full-time & degree-level courses, and per course for part-time courses.*

*There may be other costs associated with this course e.g. kit, equipment, books, trips etc. Financial support may be available to support you with these. See the [Student Money](#) pages for more information.*

## Courses Fees

The current full-time & degree-level fee information is related to the 2021/22 academic year and is subject to change before the start of the course. Fees for 2022/23 will be updated in the Spring Term 2022. There may also be additional costs associated with the course.

### Entry Level, Level 1 & Level 2 Courses

You may qualify for financial support to cover the cost of a government-funded qualification if any of the below apply to you:

- Receive an eligible means-tested benefit e.g. JSA, ESA or Universal Credit
- Have an annual salary of less than £17,374.50
- Were aged 16-18 on 31/08/21 and are not studying at another school/college
- Were aged 19 or over on 31/08/21 and do not already have a Level 1 or 2 qualification
- Have a household income under £25,000 and are in financial hardship

See the [Student Money](#) pages for more information.

## Student Finance (Degree-Level Courses)

Whether you qualify for student finance depends on specific criteria. The main student finance package for full-time students includes a tuition fee loan and maintenance loan for living costs. Part-time students can access a tuition fee loan to pay for your course. Generally, you will only get student finance if you're doing your first degree-level qualification. This is true even if your previous course was self-funded. For further information please see [www.gov.uk/student-finance](http://www.gov.uk/student-finance).

The Access to Learning Fund is a non-repayable discretionary fund that gives students facing hardship extra financial support to access and remain in higher education. This can be accessed via the college. Please speak to [Student Services](#) for more information.